

# C.I.P.

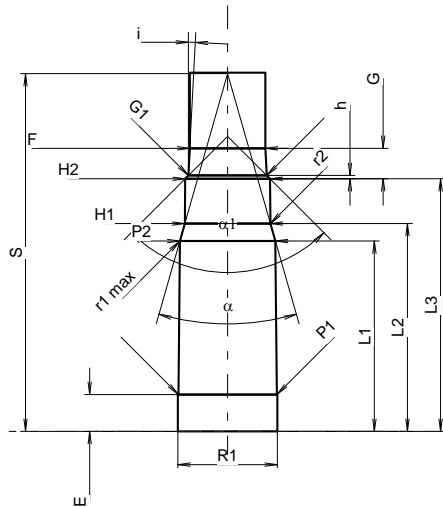
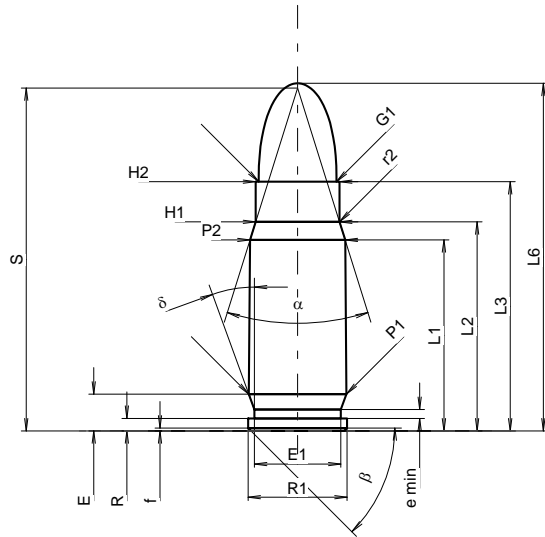
## 7,63 Mauser

Country of Origin: DE

TAB. IV

Date 84-06-14

Revision 06-09-19



Scale 1.31:1

Dimensions in << mm >>  
Dimensions and Tolerances for Proof Barrels  
see Appendix CR 1.

### CARTRIDGE MAXI

#### Lengths

L1 <sup>1)</sup> *	=	19.28	-0.20
L2 <sup>1)</sup> *	=	21.10	-0.20
L3 <sup>1)</sup>	=	25.15	
L4	=		
L5	=		
L6	=	35.08	

#### Case Head

R	=	1.27	
R1	=	9.98	
R3	=		
E	=	3.72	
E1	=	8.73	
e min	=	0.90	
delta	=	20°	
f	=	0.30	
beta	=	45°	

#### Powder Chamber

P1	=	9.86	
P2 <sup>1)</sup> *	=	9.60	-0.20

#### Junction Cone

alpha	=	34°46'47"	
S	=	34.61	
r1 min	=		
r2	=	2.50	

#### Collar

H1 *	=	8.46	
H2 <sup>1)</sup>	=	8.46	

#### Projectile

G1 <sup>1)</sup>	=	7.86	
G2	=		
F	=		
L3+G <sup>1)</sup>	=	28.22	

#### Pressures (Energies)

##### Method Transducer

Pmax	=	2250 bar	
PK	=	2588 bar	
PE	=	2925 bar	
M	=	17.50	

#### Miscellaneous Dimensions

Fe <sup>1)3)</sup>	=	0.20	
delta L	=		

Notes: 1) Check for safety reasons  
3) Headspace on Shoulder  
\* Basic dimensions

### CHAMBER MINI

#### Lengths

L1 *	=	19.21	
L2 *	=	20.98	
L3 <sup>1)</sup>	=	25.50	

#### Breech

R	=	1.27	
R1	=	10.03	
R2	=		
R3	=		
r	=		

#### Powder Chamber

E	=	3.72	
P1 <sup>1)</sup>	=	9.93	
P2 *	=	9.64	

#### Junction Cone

alpha <sup>1)</sup>	=	31°50'53"	
S	=	36.10	
r1 max	=	2.50	
r2	=	2.50	

#### Collar

H1 *	=	8.63	
H2 <sup>1)</sup>	=	8.55	

#### Commencement of Rifling

G1 <sup>1)</sup> *	=	7.90	
G <sup>1)</sup> *	=	3.07	
alpha1	=	90°	
h *	=	0.33	
s	=		
i <sup>1)</sup>	=	2°55'30"	
w	=		

#### Barrel

F <sup>1)</sup> *	=	7.62	
Z <sup>1)</sup>	=	7.85	

#### Grooves

b	=	2.65	
N	=	6	
u	=	250.00	
Q	=	47.47	mm <sup>2</sup>